

bambooty's easy one size nappy



Welcome to the world of easy one size nappies by bambooty. Bambooty's easy one size nappies are designed with the same focus as our sized nappies, with a trim fit at the fore front of our minds as well as ease of use and still looking great! Particularly in our 2 new prints ☺

Please find below our guide for fitting the nappy at different stages. Essentially there are 4 sizes as with our sized nappies, small/newborn, medium, large and extra large. The fit for each size is similar to its sized equivalent however the one size nappy also gives the options of having a higher rise nappy if desired for a more secure fit on older children as with our XL night nappies.

Being a bambooty all in one nappy, this nappy features:

- PUL outer – so no need for a cover
- Absorbency sewn in – no need for puzzling together complicated bits and pieces
- Suede cloth top (super soft) – keeps baby feeling dry and it is also stain resistant for a clean look wash after wash
- Bamboo and organic cotton fabric combined with microfiber for the optimum comfort and absorbency
- Fun prints and subtle colours so baby looks good too ☺
- All sizes can be boosted for heavy wetters and/or night time use
- Booster supplied can be snapped in or simply pop them between absorbency flaps where needed
- Absorbency flaps can be folded forwards for tummy time or boys to customise absorbency without boosting

Newborn fitting



First of all – unsnap the snap in booster if needs be, revealing the inside row of snaps to be used for the newborn fitting.

After placing bub on the open nappy and bring the front of the nappy up onto their tummy, roll up the front of the nappy exposing the second row of snaps for the new born size



Pull in each side to the right size for your bub fastening the left hand side first if needing to use the cross over tab snaps

Followed by the right hand side to complete putting on the nappy



And you're done!

It's that easy 😊

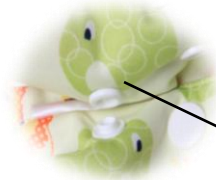
Medium Fitting



Open out the nappy and re-snap in the snap in booster if needed, lay it underneath the flap attached at the back of the nappy for a stay dry suede cloth top layer.

Place bub onto the nappy.

Wing droop snaps



Tuck the label inside to expose the wing droop prevention snap



Pull up the front of the nappy onto bub's tummy, using the top 2 snaps from the sides do up the nappy to fit well using the bottom row of snaps across the front

Fasten the right side along the same rows of snaps, using the cross over snaps if needs be.

Fold down the top section using the wing droop snaps to hold this section in place. Tucking in both labels as shown will reveal the wing droop prevention snaps.



And that's it for the medium size 😊

Large fitting



This is an example of how the nappy can be done up for the size large, we have used the top row of snaps, then missed a row across the front and used the bottom row across the front to give it a neater looking fit.

If wing droop is a problem at this size then a similar fit can be used as for the size medium, only using the top row of snaps for the wing droop prevention snaps hidden under the labels.

Extra large fitting



Last but not least the extra large size, using, using the top 2 rows of snaps and up to all 4 snaps on each side for extra support, this is not necessary for every child every time though, particularly those who don't like to stay still during nappy changes. 😊

Any questions please don't hesitate to get in touch 😊

We answer emails as quickly as can – customerservice@bambooty.com.au

Our facebook page is often responded to faster – www.facebook.com/bambooty.the.baby.happy.nappy

We also appreciate any feedback you may have.

Thank you, the bambooty team 😊